

snaplink™ - Core

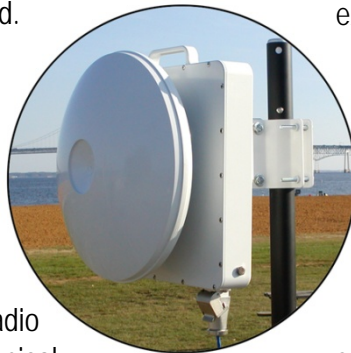


Data Sheet for SnapLink Core

Introducing the new SnapLink™ - **Core**. The **Core** delivers **40 Mbps** (Half Duplex) of **highly secure** data transport for interference free, high speed data, voice and video. Its easy to install and operate.

The **Core** is part of the growing family of SnapLink products operating in the interference free and highly secure unlicensed 24 GHz frequency band. Additionally, it operates using built-in Advanced AES encryption.

Like all radios in the SnapLink Family it is a "Snap" to install with its single unit design that combines the radio and antenna in a rugged mechanical package. A single cable provides both data and power.



The units automatically acquire each other as soon as power is applied. The **Core** is configured to use a variety of mounting systems and the Radios use external LEDs for alignment negating the need for special alignment tools or laptops. They will adjust data rates in severe weather conditions to keep the link and the service alive.

The SnapLink-Core is ideal for secure POS applications, seasonal kiosks, quick reaction to outages, warehouse connections or any communications requirement needing security, flexibility and cost effectiveness.

Features

- Highly Secure, cost effective
- Advanced AES encryption built-in
- 40 Mbps (Half Duplex) up to 5 miles
- Operates in Interference Free, unlicensed band
- A "Snap" to : Install : Turn Up : Maintain
- "Plug and Play" into Ethernet Networks



Item	Specification	Comments
Air Interface		
Frequency * (3 selectable channels)	24 GHz unlicensed. (24.05 – 24.25 GHz)	Other millimeter frequencies on request
Low	24.112 GHz	
Mid	24.137 GHz	
High	24.162 GHz	
Modulation	DQPSK	
Spread Spectrum	OFDM / Direct Sequence Spread Spectrum	
Point to point		
Antenna Type	12" reflector antenna	
Antenna Gain	34.4 dBi typical at millimeter wave	12" antenna @ 24 GHz
Antenna Beam Width	2.6° typical, 3dB beam width millimeter wave	12" antenna @ 24 GHz
Network Interface		
Network Topology	Pt. to Pt.	
Effective Data Rate	40 Mbps (Half Duplex) to the customer @ error rate of 10 ⁻⁶ or better	Distance and frame size dependent
Cable	Category 5/6	
Connector	RJ-45 female modular jack	Data and DC power
Interface	10/100BaseT via AC power adapter	
Range		
Range millimeter wave	40 Mbps (Half Duplex) of customer bandwidth up to 5 miles	12" antenna
Physical & Power (POE)		
Weight	5.5 kg typical	Excluding the mount
Mounting	Pipe or wall mount	
Grounding	8 mm bolt on the transceiver for grounding	
DC voltage	+20V _{DC} to +56V _{DC} into the receiver	
Power Consumption	10 Watts nominal	
Dimensions	304mm (12") x 304 mm (12") x 51mm (2")	Excluding antenna
Environmental		
Enclosure	All weather, designed to IP67 specifications	
Operating Temperature	-35° to + 55° C	
Specifications at +25° C unless otherwise specified		

* SnapLink can be made in any frequency band between 20-40 GHz